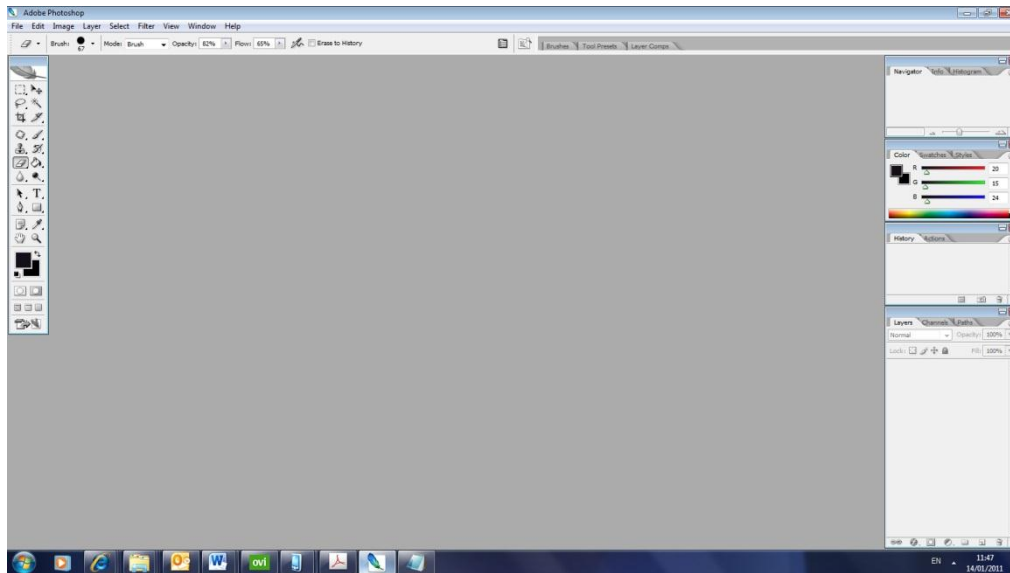


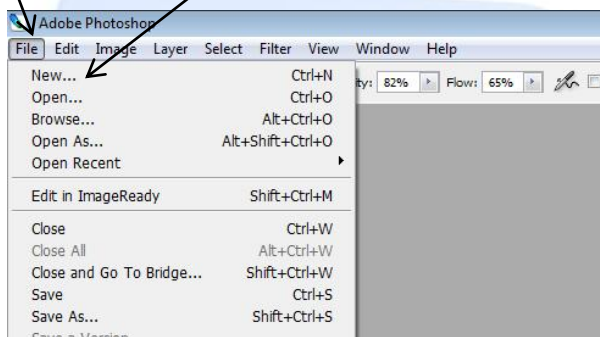
Creating a Vignette

Load Photoshop and you will be presented with the standard Screen



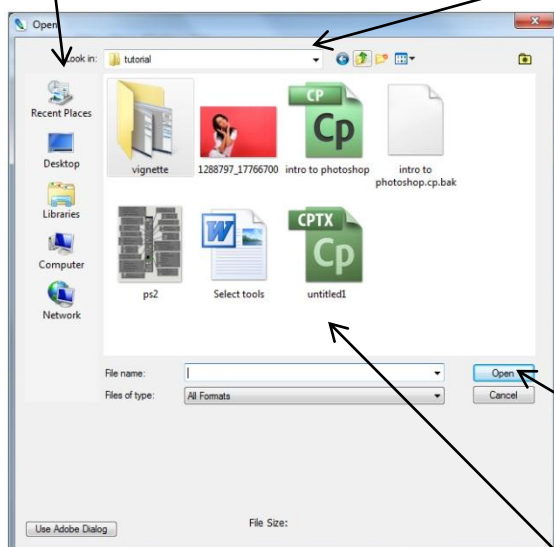
Open an image by clicking

File > open



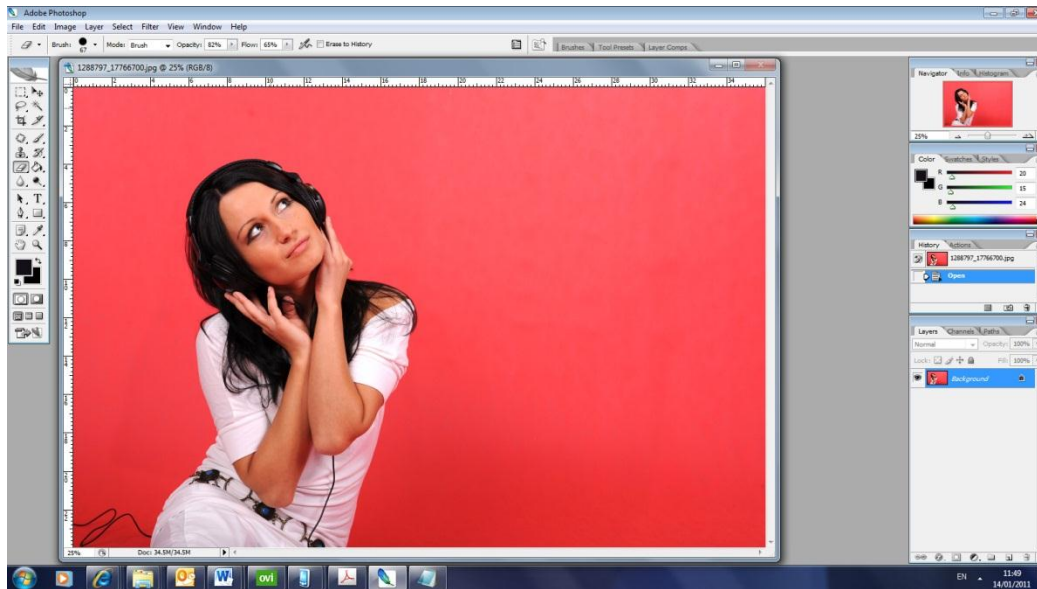
This will open the following window

Locate your photo on your computer using the recent places on the left hand side or the drop down menu



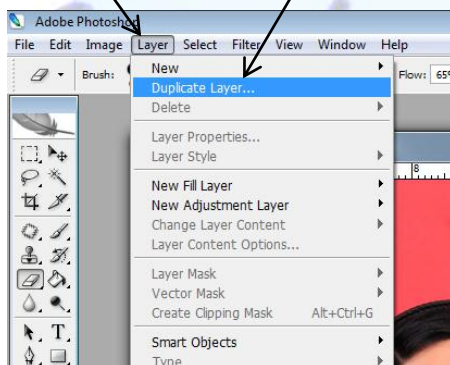
Once you have found your photo click on it in this window and then **click open**.

You should now have a photo on screen ready to work on.



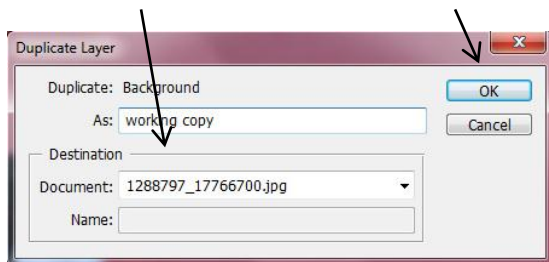
The first thing we need to do is duplicate our background layer, this will give us a copy within our document we can refer back to if we make a mistake.

Click Layer > Duplicate Layer

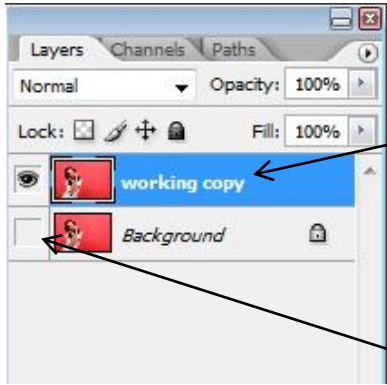


This will pop up with the following window

add an appropriate name then click ok.



You should now see in the layers palette your new layer, in this instance 'Working Copy'

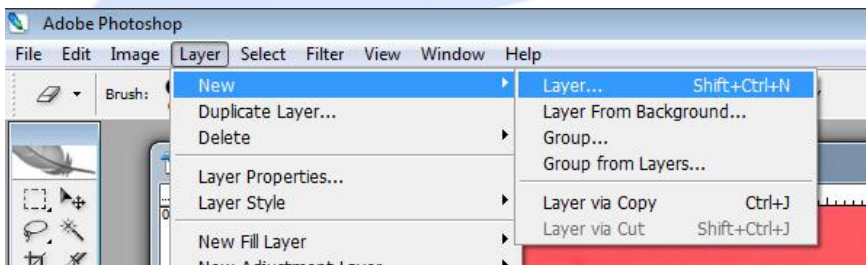


To protect our background layer a little more click the eye so that it disappears.

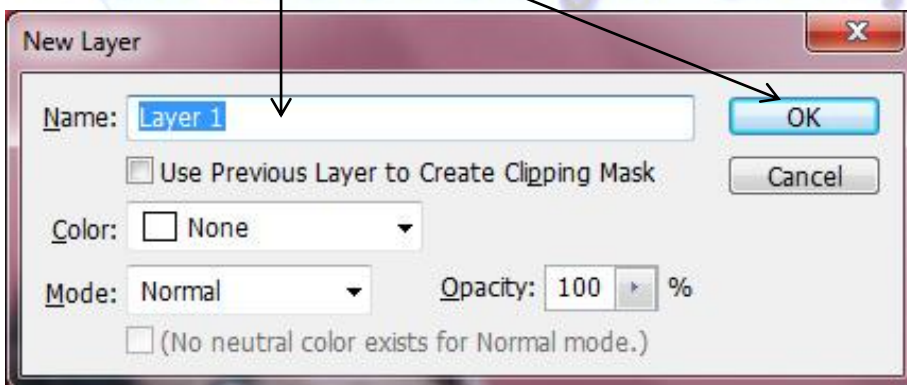
Ensure you click back on the 'Working copy', the top layer, to ensure that it is highlighted blue this will make this layer the active layer.

We are now going to create our background colour layer, this is the layer that will show around an image after adding the vignette.

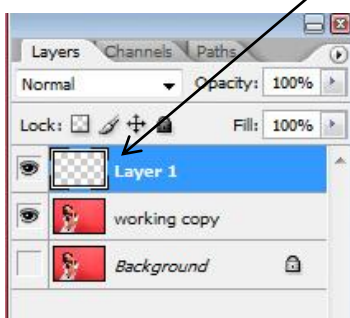
Click Layer>New>layer



Type an appropriate name and click ok.



This will have added a new layer in the layers palette.



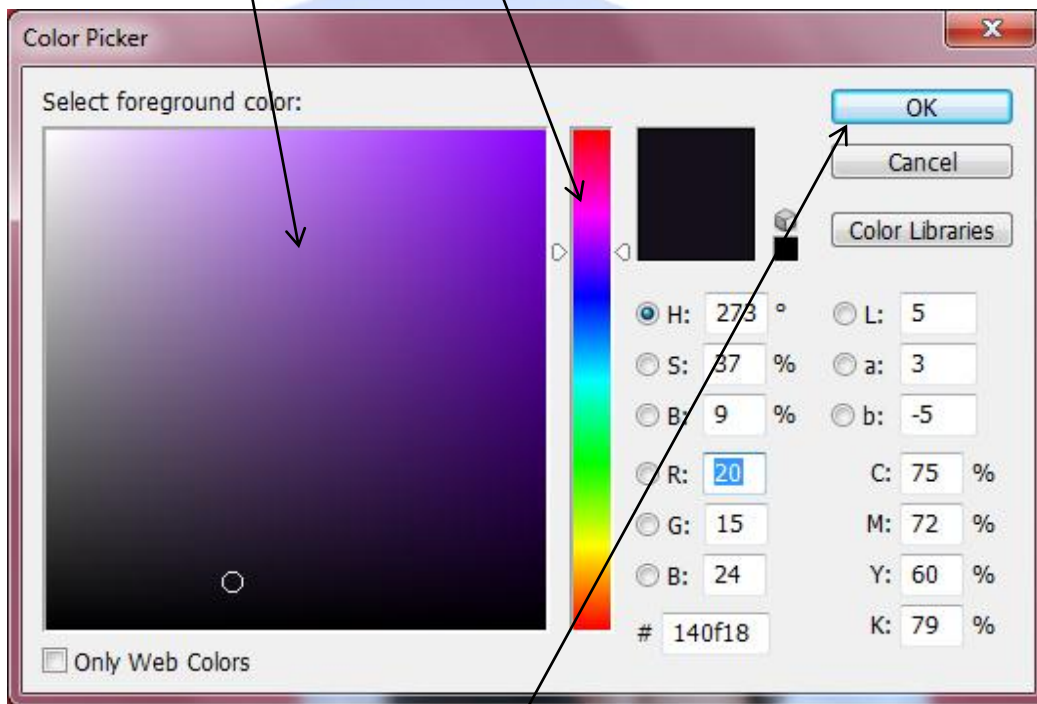
Click the colour picker from the toolbar.



This will bring up the colour picker window.

Select a rough colour from the narrow bar by clicking anywhere on it.

You can then fine tune by clicking anywhere in the main window.

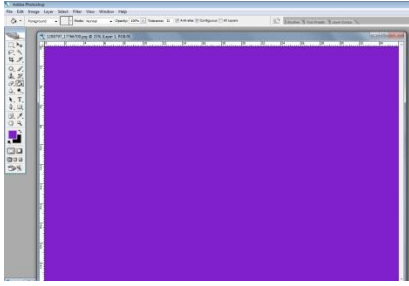


Once you have made your selection click ok.

Now choose the Paint bucket tool from the tools palette.

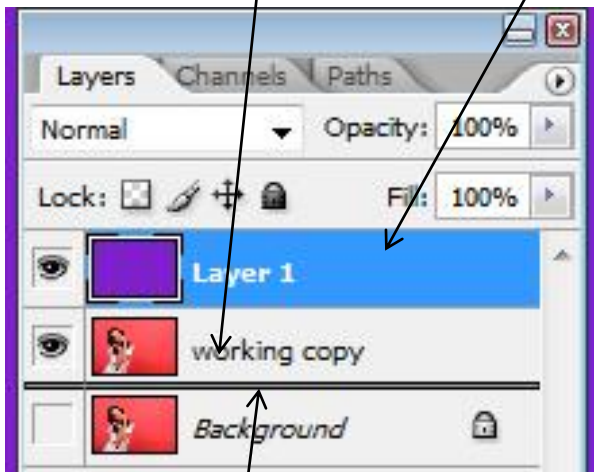


Then simply click anywhere on your image to flood fill with the background colour.



We now need to re-order the layers to place this underneath the 'Working copy' Layer

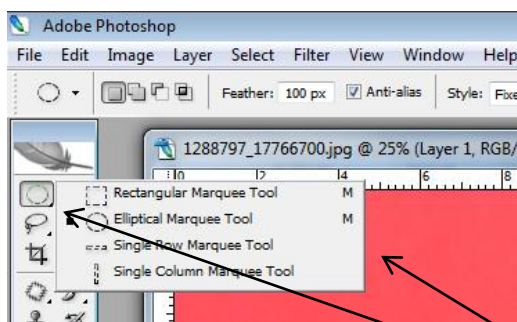
In the layers palette click and hold onto the 'layer1' or the layer at the top of the list and drag it to below the working copy and then let go.



You will see a black bar appear where it will place the layer when you drop it.

You should now see your original photo instead of the fill layer.

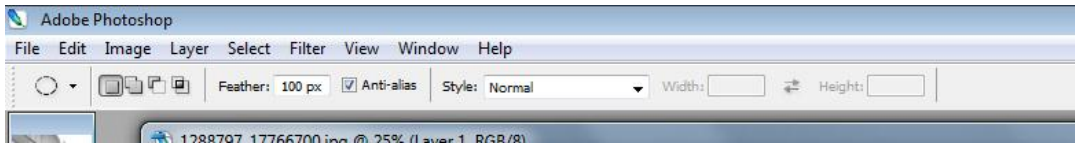
Now select the 'elliptical marquee' tool from the toolbox.



If it the Rectangular Marquee tool, **Right click on the little black triangle at the bottom right of the tool. Then left click on the relevant tool from the options.**

This tool will give us a clean, perfect cut out, what we really need is a feathered effect.

To create this feathered effect you will need to add a feather to the tools options at the top of the Photoshop window.



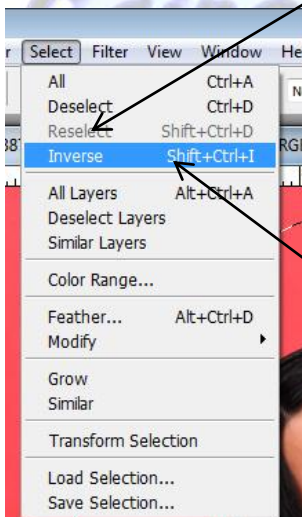
Click in the feather box and delete what is there and place in your own value in this instance I have added 100px.

The larger your image the bigger the feather required.

You now need to click and drag to create a selection around your subject

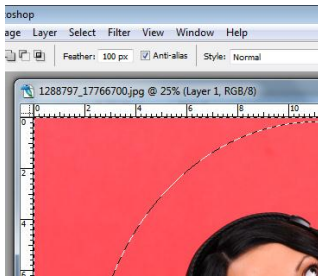


If you make a mistake click Select>Deselect then make your selection again.

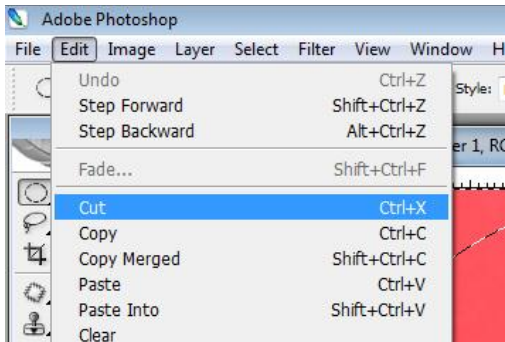


You now need to inverse the selection by clicking Select>Inverse. This will allow you to remove the surrounding area and leave the subject in place. You will see 'Walking Ants' around the entire image and around the subject.





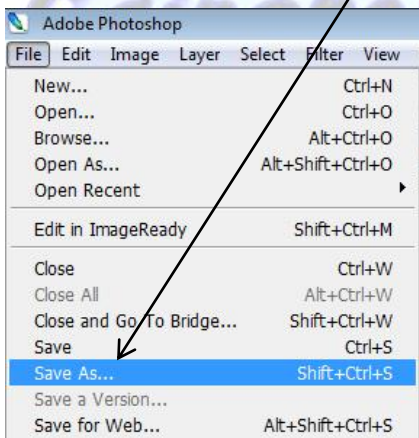
Now Click Edit>Cut.



This will remove the background with a feather showing the colour of the vignette underneath

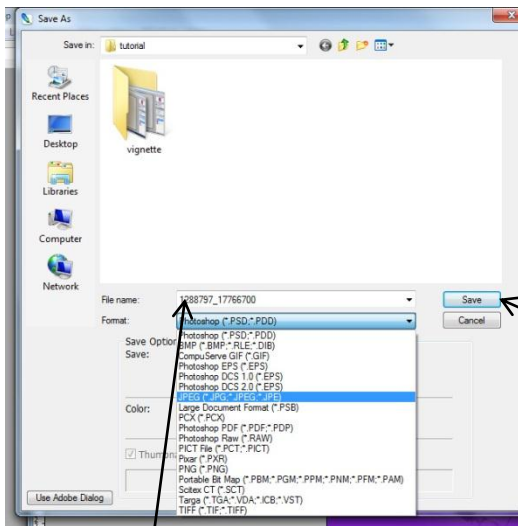
Saving your work.

To save your work click **File>Save As**



Saving as JPEG

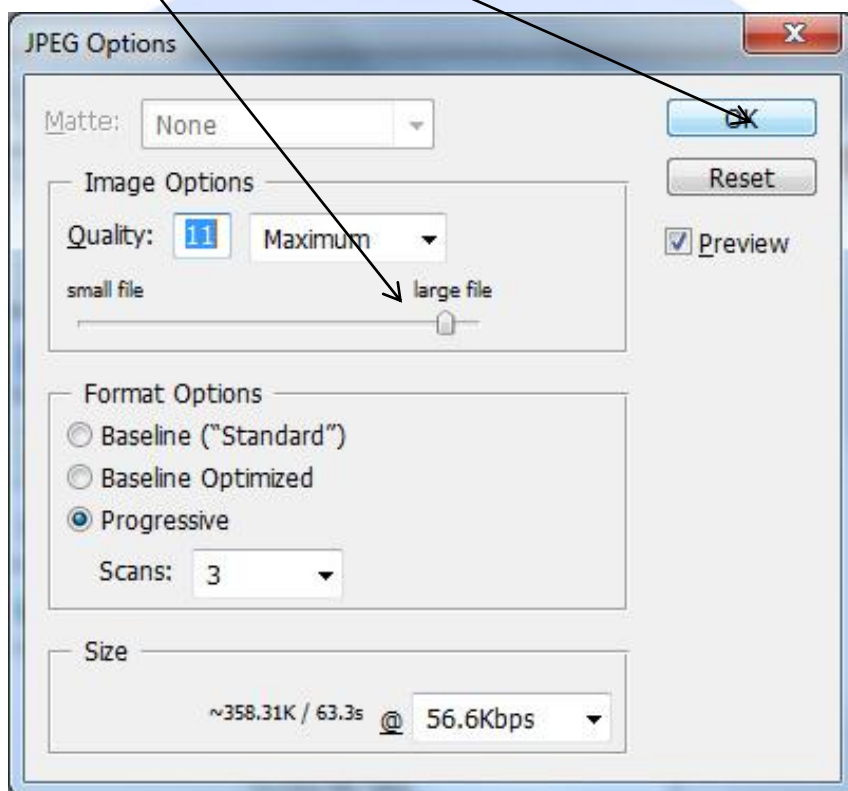
If you have finished with your image and don't wish to edit it again you can save it as a Jpeg
To do this **choose Jpeg from the 'format' dropdown box.**



Type a name for your image (different to the original so you don't overwrite it) and click save.

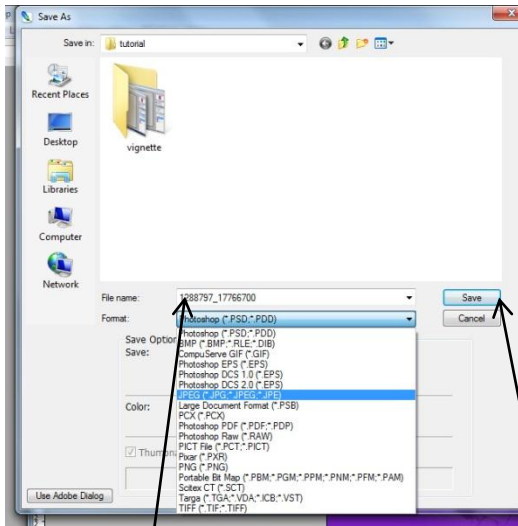
This will bring up the JPEG options.

Leaving the quality at Maximum is fine for storing your images on your computer. Slide the slider to the right 'large file' then click ok.



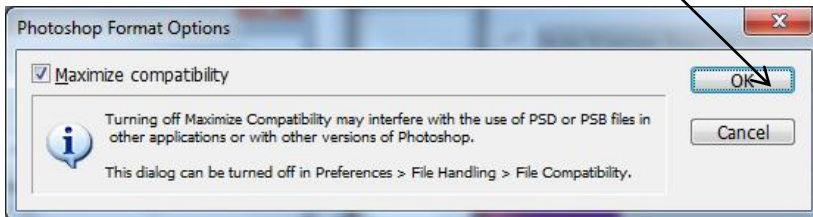
Saving as a PSD

If you wish to save the layers for editing later then save you image as a PSD
To do this **Choose from PSD the 'format' dropdown box.**



Type a name for your document and click save.

This will prompt you to Maximise compatibility click ok.



Gainsborough Snappers